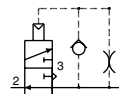
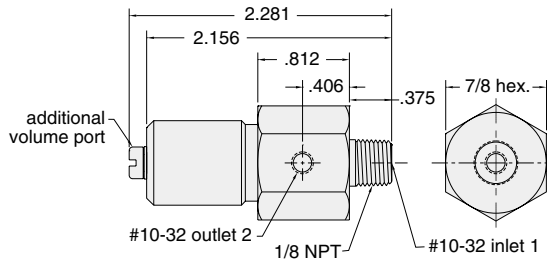




SPECIALTY COMPONENTS

PV-1

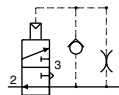
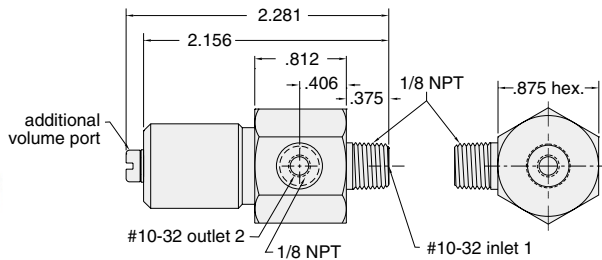
Miniature pulse valve, a normally open 3-way valve that closes shortly after being pressurized and remains closed until supply pressure is exhausted and repressurized. Widely used in control circuits.



Medium: air
Input Pressure: 20 to 150 psig max.
Mounting: 1/8 NPT thread; nut furnished
Ports: Inlet - 10-32 female & 1/8 male, Outlet - 10-32 female
Exhaust: To atmosphere through hole
Volume Chamber: 10-32
Operation: Converts a continuous supply of inlet air into a pulse of approximately 100 milliseconds
Response: 300 cycles per minute; time delay may be increased by adding standard Clippard volume chambers not to exceed 3 cu. in.
Temperature Range: 32° to 230° F
Construction: Body - brass, Seals - Buna-N rubber, Spring - stainless steel, Poppet - Delrin®

PV-1P

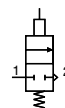
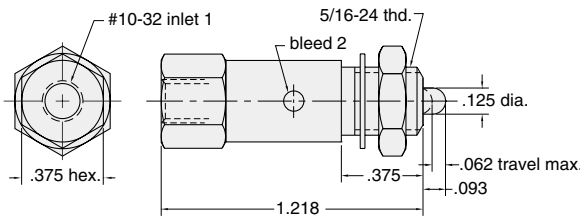
Miniature pulse valve, a normally open 3-way valve that closes shortly after being pressurized and remains closed until supply pressure is exhausted and repressurized. Widely used in control circuits.



Medium: air
Input Pressure: 20 to 150 psig max.
Mounting: 1/8 NPT thread; nut furnished
Ports: Inlet & Outlet - combinations 10-32 female and 1/8 NPT male
Exhaust: To atmosphere through hole
Volume Chamber: 10-32
Operation: Converts a continuous supply of inlet air into a pulse of approximately 100 milliseconds
Response: 300 cycles per minute; time delay may be increased by adding standard Clippard volume chambers not to exceed 3 cu. in.
Temperature Range: 32° to 230° F
Construction: Body - brass, Seals - Buna-N rubber, Spring - stainless steel, Poppet - Delrin®

MPS-2

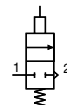
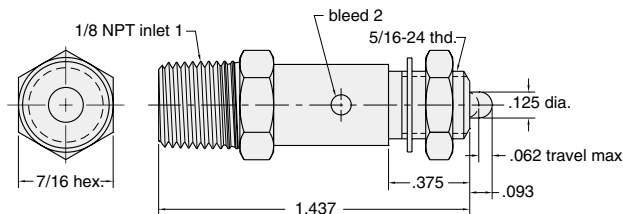
Normally closed 2-way poppet valve miniature pilot sensor, for use with pressure piloted control circuits, can repeatedly detect a position within .002" properly mounted. In jigs or fixtures it will signal correct position and start-ok to control circuit.



Medium: air
Stem Travel: 1/16" max. will open and close in as little as .0005"
Input Pressure: 300 psig max.
Air Flow: @50 psig - 3 SCFM @100 psig - 6 SCFM
Force For Full Stem Travel: 7 oz. nominal
Mounting: 15/16-24 thread Nut and lockwashers furnished
Ports: Inlet -10-32, Bleed -hole to atmosphere
Temperature Range: 32° to 230° F

MPS-2P

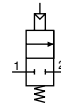
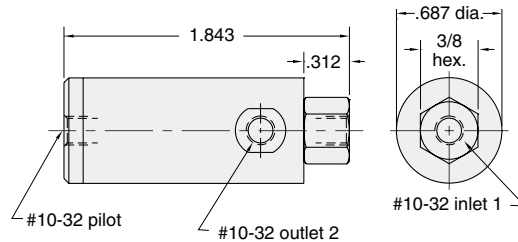
Normally closed 2-way poppet valve miniature pilot sensor, for use with pressure piloted control circuits, can repeatedly detect a position within .002" properly mounted. In jigs or fixtures it will signal correct position and start-ok to control circuit.



Medium: air
Stem Travel: 1/16" max. will open and close in as little as .0005"
Input Pressure: 300 psig max.
Air Flow: @50 psig - 3 SCFM @100 psig - 6 SCFM
Force For Full Stem Travel: 7 oz. nominal
Mounting: 15/16-24 thread Nut and lockwashers furnished
Ports: Inlet -1/8 NPT male; bleed -hole to atmosphere
Temperature Range: 32° to 230° F

WDV-2

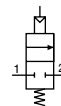
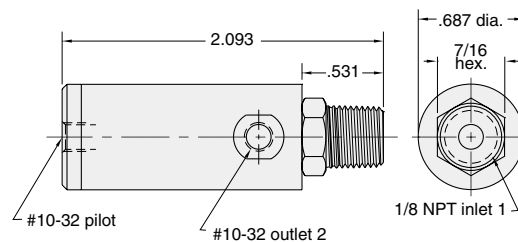
2-way normally closed poppet with air pilot. When valve closes a spring biased internal piston draws back a small volume on outlet side (approx. 6-7 inches in 1/8 I.D. tube) thus preventing overflow or dribbles. Ideal for use in quenching or water spray applications.



Medium: Water or other light liquids
Input Pressure: 100 psig max.
Pilot Pressure: 25 psig min.
Flow: 74 cu. in. H₂O per min. @ 80 psig
Drawback: .07 cu. in. (1.2 ml)
Mounting: Mounts inline
Ports: Inlet - 1/8 NPT, Outlet - 10-32, Pilot - 10-32
Temperature Range: 32° to 230° F

WDV-2P

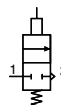
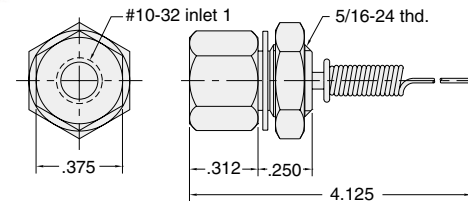
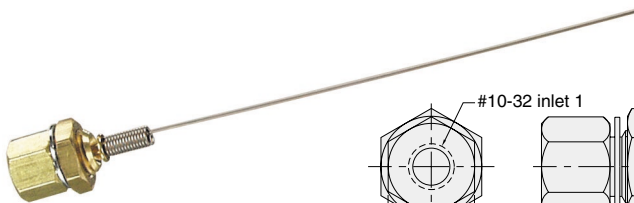
2-way normally closed poppet with air pilot. When valve closes a spring biased internal piston draws back a small volume on outlet side (approx. 6-7 inches in 1/8 I.D. tube) thus preventing overflow or dribbles. Ideal for use in quenching or water spray applications.



Medium: Water or other light liquids
Input Pressure: 100 psig max.
Pilot Pressure: 25 psig min.
Flow: 74 cu. in. H₂O per min. @ 80 psig
Drawback: .07 cu. in. (1.2 ml)
Mounting: Mounts inline
Ports: Inlet - 1/8 NPT, Outlet - 10-32, Pilot - 10-32
Temperature Range: 32° to 230° F

MWV-1

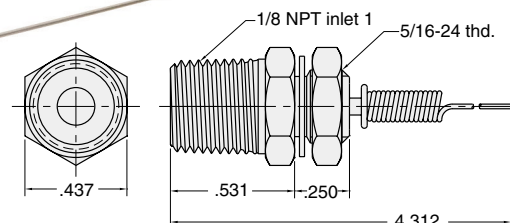
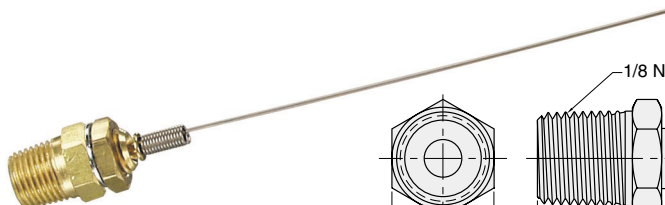
Normally closed 2-way poppet whisker valve for use with bleed pressure piloted control circuits. Coil spring stainless steel whisker is easily replaceable and can be formed to different shapes.



Medium: Air
Input Pressure: 150 psig max.
Air Flow: @50 psig - 1.0 SCFM
 @100 psig - 1.5 SCFM
Force For Full Stem Travel: 1/4 oz. approx.
Mounting: 5/16-24 male thread
 Nut and lockwashers furnished
Ports: Inlet - 10-32
Temperature Range: 32° to 230° F
Bleed: To atmosphere around whisker stem
Whisker: Stainless steel, approx. 3" length
 Replaceable (Part Number 12375)

MWV-1P

Normally closed 2-way poppet whisker valve for use with bleed pressure piloted control circuits. Coil spring stainless steel whisker is easily replaceable and can be formed to different shapes.



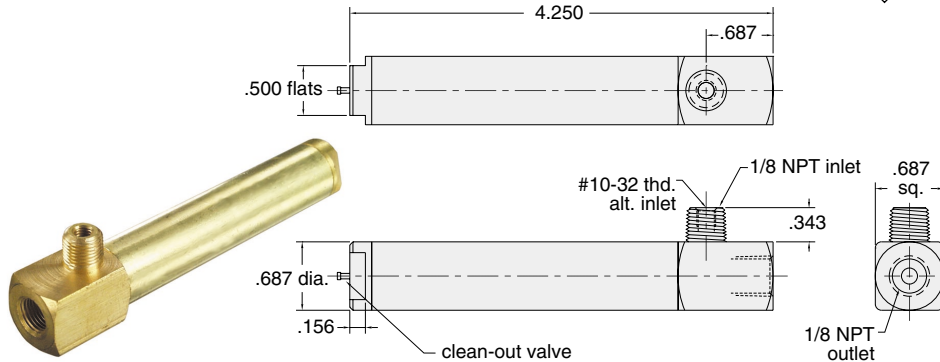
Medium: Air
Input Pressure: 150 psig max.
Air Flow: @50 psig - 1.0 SCFM
 @100 psig - 1.5 SCFM
Force For Full Stem Travel: 1/4 oz. nominal
Mounting: 5/16-24 male thread
 Nut and lockwashers furnished
Ports: Inlet - 1/8 NPT
Temperature Range: 32° to 230° F
Bleed: To atmosphere around whisker stem
Whisker: Stainless steel, approx. 3" length
 Replaceable (Part Number 12375)



SPECIALTY COMPONENTS

MAF-1

Replaceable miniature air filter with element



Medium: Air only
Filtration: 35 micron
Input Pressure: 0-250 psig max.
Air Flow: @50 psig - 5.0 SCFM
 @100 psig - 9.0 SCFM

Material: Brass
Mounting: Direct or inline
Ports: Inlet - OD - 1/8 NPT male thread, ID - tapped for 10-32 fitting, Outlet - 1/8 NPT

Temperature Range: 32° to 230° F
Cleanout: Press clean-out valve stem periodically to remove accumulated water. For complete cleaning, filter body unscrews at point "A" without disturbing piping. DO NOT DISASSEMBLE UNDER PRESSURE. Remove screw and filter element to clean or replace

Uses replacement filter unit, part #12145.

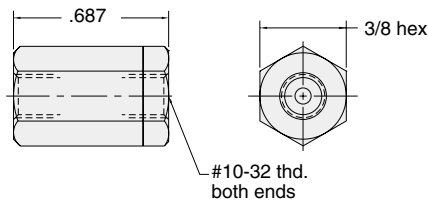
12382

Low pressure drop, concentric, chemically inert 35-micron filter elements

Material: Sintered bronze

MAC

Inline fixed orifice air chokes, each choke is calibrated for precise flow

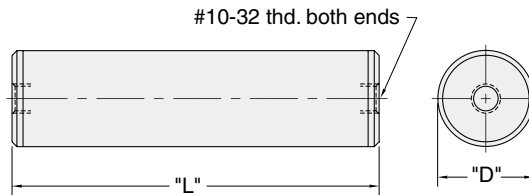


Medium: Air
Material: Brass
Working Range: 0-300 psig max.
Temperature Range: 32° to 230° F

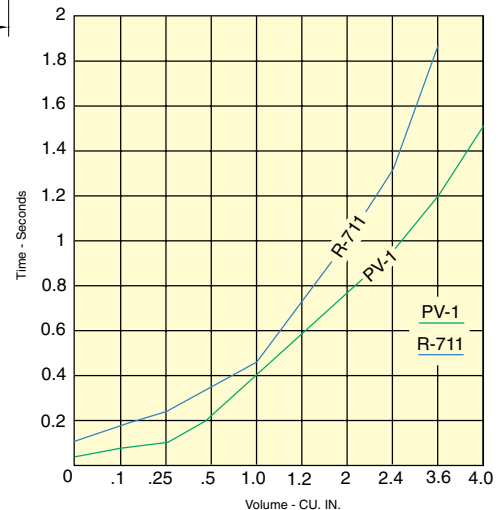
Model #	Hole dia.	Color code
MAC-A	.0135	yellow
MAC-B	.010	green
MAC-C	.0075	blue
MAC-D	.006	red

MAT-□

Inline volume chamber for providing time delay in pneumatic circuits



Medium: Air only
Material: Brass
Input Pressure: 150 psig max.
Mounting: Direct or inline; Mounting clamp furnished with MAT-2.0 and MAT-4.0
Ports: tapped for 10-32 fitting
Temperature Range: 32° to 230° F



The time delay of the PV-1, PV-1P and R-711 may be increased by adding standard Clippard volume chambers. The chart to the left shows the TIME versus VOLUME for these combinations.

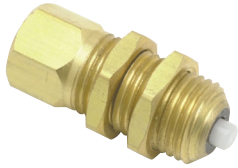
Volume CU. IN.	Volume Chamber
0.1	MAT-.1
0.25	MAT-.25
0.50	MAT-.50
1.0	MAT-1.0
1.2	R-821
2.0	MAT-2.0
2.4	R-821 (2)
3.6	R-821 (3)
4.0	MAT-4.0

Dash #	Bore	"L"	"D"	Cu.In
.1	3/8	1.265	.437	0.1
.25	3/8	2.640	.437	0.25
.5	9/16	2.390	.625	0.5
1.0	9/16	4.390	.625	1.0
2.0	15/16	3.328	1	2.0
4.0	15/16	6.234	1	4.0

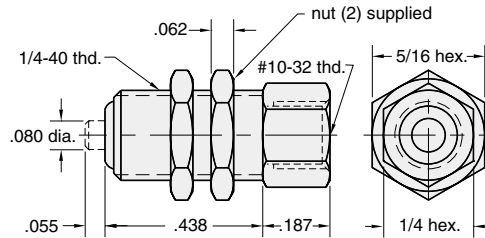
Time in Seconds		
Volume	PV-1	R-821
0	0.042	0.117
.1	0.074	0.180
.25	0.124	0.245
.5	0.210	0.350
1.0	0.390	0.450
1.2	0.580	0.700
2.0	0.760	1.000
2.4	0.950	1.300
3.6	1.200	1.900
4.0	1.500	N.R.

R-821 volume chambers are shown in the Modular Section of this catalog.

IND-1-WH



Single Pin Air Indicator plunger type (when extended white pin display signals "on")

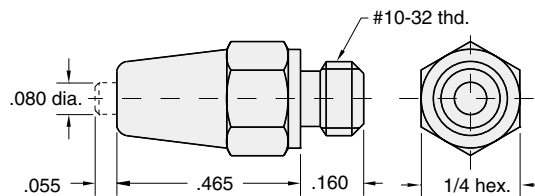


- Medium:** Air only
- Input Pressure:** 150 psig max.
- Minimum Actuation Pressure:** 12 psig (approx)
- Response:** approx. 10 ms at 50 psig
- Filtration:** 40 micron recommended
- Mounting:** Panel mount 1/4 dia. hole. 1/4-40 thd. nuts provided
- Ports:** Inlet - 10-32 female
- Temperature Range:** 32° to 230° F
- Maximum Panel Thickness:** 3/16"

IND-1M-WH



Single Pin Air Indicator plunger type (when extended white pin display signals "on")



- Medium:** Air only
- Input Pressure:** 150 psig max.
- Pressure:** 12 psig (approx)
- Response:** approx. 10 ms at 50 psig
- Filtration:** 40 micron recommended
- Mounting:** Inline
- Ports:** Inlet - 10-32 male
- Temperature Range:** 32° to 230° F

Ordering Information

Specify display color by adding two of the following letters to the end of the IND-3 series part #:

GN - Green

WH - White

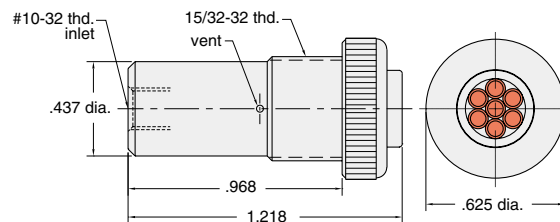
RD - Red

YL - Yellow

IND-3 - □



Multi Pin Air Indicator plunger type (when extended 7-pin color display signals "on")

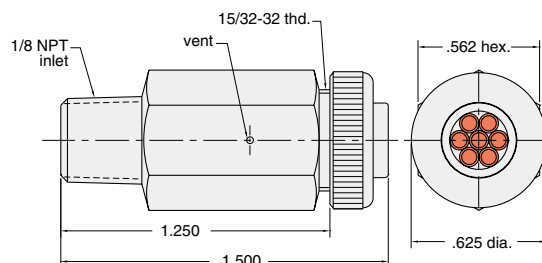


- Medium:** Air only
- Input Pressure:** 150 psig max.
- Minimum Actuation Pressure:** 15 psig (approx)
- Response:** approx. 10 ms at 50 psig
- Filtration:** 40 micron recommended
- Mounting:** Panel mount in hole. 15/32-32 nut and lockwasher provided
- Ports:** Inlet - 10-32 female
- Maximum Panel Thickness:** 3/16"
- Temperature Range:** 32° to 230° F

IND-3P - □



Multi Pin Air Indicator plunger type (when extended 7-pin color display signals "on")



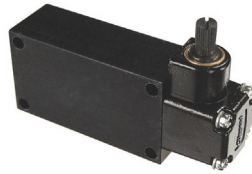
- Medium:** Air only
- Input Pressure:** 150 psig max.
- Minimum Actuation Pressure:** 15 psig (approx)
- Response:** approx. 10 ms at 50 psig
- Filtration:** 40 micron recommended
- Mounting:** Direct mount into 1/8 NPT hole
- Ports:** Inlet - 1/8 NPT male
- Temperature Range:** 32° to 230° F



HEAVY DUTY LIMIT VALVES

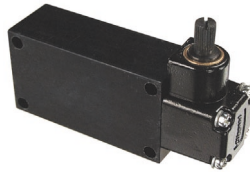
LVA-2

2-way poppet normally closed heavy duty air limit valve



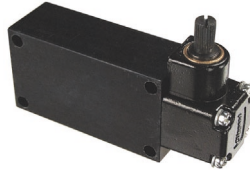
LVA-3

3-way poppet normally closed heavy duty air limit valve



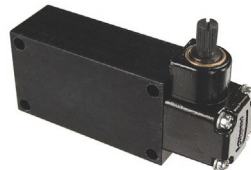
LVAO-2

2-way normally open heavy duty air limit valve



LVAO-3

3-way poppet normally open heavy duty air limit valve



These valves feature rugged construction to withstand heavy use. A zinc alloy die cast actuator head with a hardened steel shaft in a bronze bearing is mated to a solid aluminum valve body. Inside is a Clippard series cartridge valve (MJV-2C or 3C, MJVO 2C or 3C) made of brass and stainless steel with Buna-N seals. Valve cartridge is easily replaced in minutes. Three different style actuator arms are available on next page.

Medium: Air

Stem Travel: Actuator arm may move 50° in either direction

Input Pressure: 300 psig max.

Air Flow: @50 psig - 10 SCFM
@100 psig - 19 SCFM

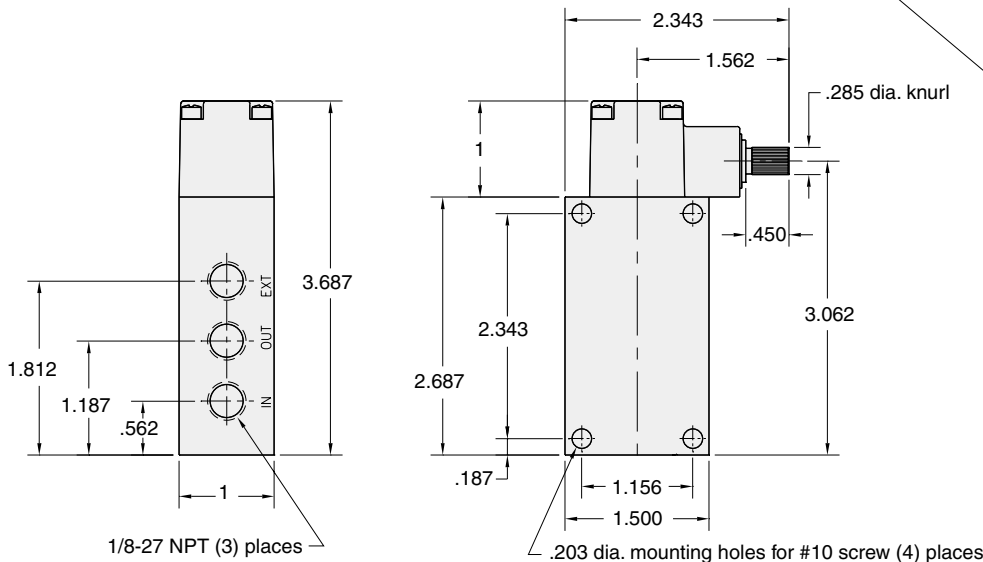
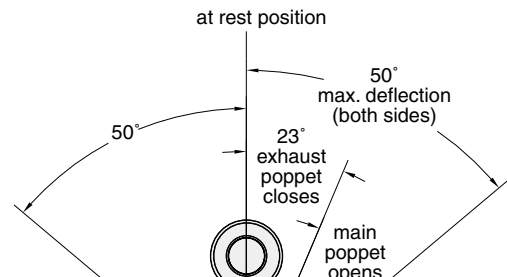
Torque to Actuate: 3 in./lbs.

Actuation Range: 0-23° Off, 23-50° On
Maximum travel 50°

Temperature Range: 32° to 230° F

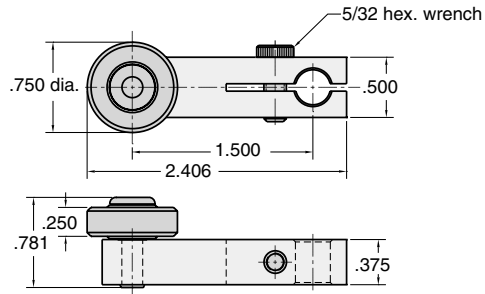
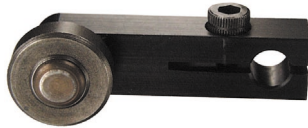
Mounting: Four 13/64" dia. mounting holes provided in valve body for use with #10 screw, or for tapping 1/4-20 by customer

Ports: Inlet - 1/8-27 NPT, Outlet - 1/8-27 NPT, Exhaust - 1/8-27 NPT for convenience in porting away exhaust air or attaching muffler; it should not be restricted; exhaust port is not used on 2-ways



AR-K

Roller actuator arm for Clippard heavy duty air limit valves



Arm: Aluminum

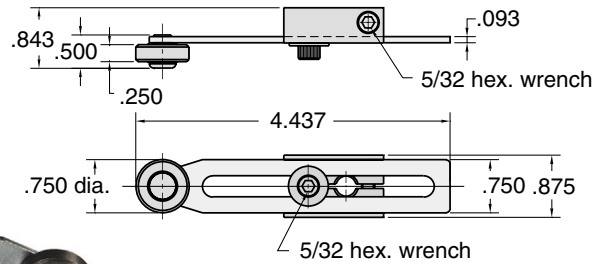
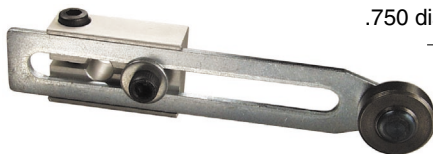
Roller: Hardened steel

Temperature Range: 32° to 230° F

Mounting: Slotted mounting clamp tightens onto limit valve with 5/32" hex wrench; may be positioned on limit valve shaft in any direction within a 360° circle

AR-L

Adjustable roller arm for Clippard heavy duty air limit valves



Arm: Aluminum base with steel extendable arm

Roller: Hardened steel

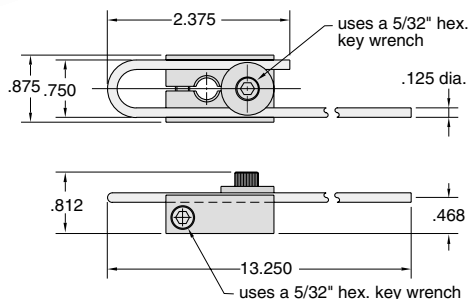
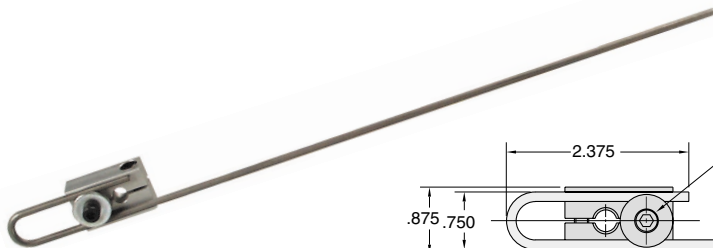
Adjustment: 1.0 to 3.5 in.

Temperature Range: 32° to 230° F

Mounting: Slotted mounting clamp tightens onto limit valve with 5/32" hex. wrench; may be positioned on limit valve shaft in any direction within a 360° circle.

AR-M

Adjustable rod actuator arm for Clippard heavy duty air limit valves



Arm: Steel 1/8" rod 13 inches long retained by screw clamp; the rod may be shortened and/or bent to desired shape

Mounting: Slotted aluminum mounting clamp may be positioned on limit valve shaft in any direction within a 360° circle

Temperature Range: 32° to 230° F